

# What Operating System Am I Running

## Am I running Windows or Mac OS?

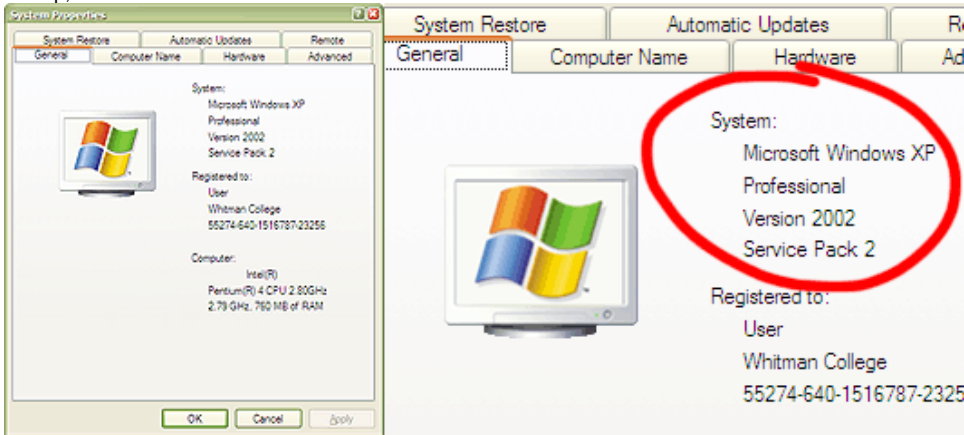
If there is a Apple logo in the upper-left corner of your screen, you are running Mac OS. If there is a Windows logo in the bottom-left corner of your screen (followed by 'start' on XP), you're running Windows.



## What version of Windows am I running?

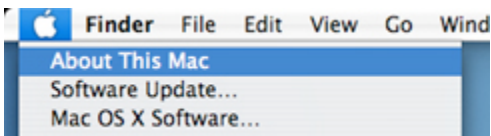
Most likely, it's Windows XP, Windows Vista, or Windows 7.

1. Open your **Start menu** (click the button labeled 'start' or the orb with a Windows logo in the bottom-left corner of your screen).
2. Navigate to the **Control Panel**. If the Control Panel not listed on your Start menu, go to 'My Computer' and click 'Control Panel.'
3. Find the '**System**' icon. If your Control Panel is organized by category, it may help to switch to an icon view or 'classic view.'
4. *Your operating system should be stated in the System panel.* It may be under the heading 'Windows Edition,' or, if your System panel has tabs at the top, click 'Hardware.' You should find the name under that.



## What version of Mac OS am I running?

1. Open the Apple menu in the top-left corner and select '**About this Mac.**'



2. The version you are running will appear in the window under the words "Mac OS X."



Note: You can find what major release name your version number corresponds to at [http://en.wikipedia.org/wiki/Mac\\_OS\\_X#Versions](http://en.wikipedia.org/wiki/Mac_OS_X#Versions).

## Related articles

- [NetZCore - On-campus student printing \(formerly known as GoPrint\)](#)
- [VPN Instructions for Mac OS X](#)
- [Upgrading unsupported MacOS](#)
- [What Operating System Am I Running](#)
- [Updating Windows](#)